

JHAC Directions and Visitor Information

The Justice Health & Forensic Mental Health Network (JH&FMHN) Administration Centre (JHAC) is located at:
1300 Anzac Parade, Malabar

The JHAC is adjacent to the main entrance for the Long Bay Correctional Complex



Directions from the CBD to the JHAC via Anzac Parade

Drive along Anzac Parade past Maroubra Junction to Malabar. You will pass St Spyridon High School on your left, and then a traffic light intersection for the local Malabar shops. Remaining on Anzac Parade for a further 1km you will see on your left a sign marking the first (one-way) entrance driveway to the Long Bay Correctional Complex for access to visitor and staff parking:

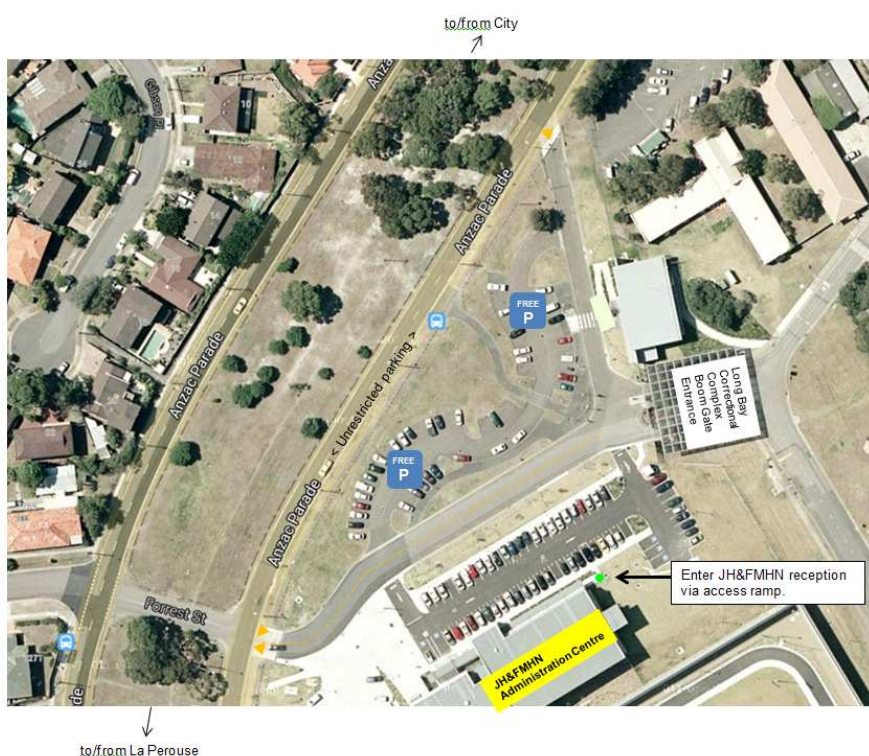
Long Bay Correctional Complex



A second driveway for entry and exit from the site is located 300m further down Anzac Parade, opposite Forrest Street.

If travelling to Malabar by public transport the L94, 393 and 394 buses stop immediately outside the Long Bay Complex.

The below aerial map highlights the main entrance to the JHAC, its proximity to the Long Bay Correctional Complex, staff and visitor parking, and the closest bus stops to/from the city.



Entry to the JHAC

The JHAC main entrance is accessible via the ramp running along the front of the building, (see below).



All staff and external visitors to the JHAC must present to Reception to be formally registered and issued with a visitors badge and lanyard. As part of this process you will need to identify yourself via photo ID, and outline the purpose of your visit and your Network contact. For example:

- Attending a meeting with the Chief Executive
- Interview
- Attending a course
- Orientation

You will be required to return to Reception for sign out and return of your visitor ID at the conclusion of your visit.

Visitor Parking

Limited visitor parking is located opposite the JHAC, (see the above aerial map or diagram below), and street parking is also available. Local on-street parking is unmetered (i.e. free) and there are no time restrictions.

Visitor parking is also available in the Long Bay Correctional Complex, however must be arranged prior to your visit through your JH&FMHN contact. Please note there are strict requirements when parking in the Correctional Centre Car Park, and your JH&FMHN contact will advise you of these.

Visitors should ring their contact person in the JHAC for assistance with parking and/or access to the building.

JH&FMHN Staff Parking

A secure JHAC staff car park, located directly in front of the JHAC, is only accessible with a pre-allocated access pass. Due to the limited number of available spaces, visitor and on-street parking may also be utilised by staff. Local on-street parking is unmetered and there are no time restrictions.

JH&FMHN staff can also access the CSNSW car park located inside the Long Bay Correctional Complex, accessible on presentation of JH&FMHN staff photo ID to security staff at the Complex's main boom gate entrance.

For new staff attending orientation, security staff at the Long Bay Correctional Complex boom gate will be provided with details of staff so that parking is available on your first day by producing photo ID, either driver's license or passport, and advising security staff that you are here to attend Network orientation.

Mobile Phones

JH&FMHN asks that all mobile phones remain on silent and/or vibrate for the duration of your visit to the JHAC.

JHAC Contact Information

T: (02) 9700 3000

E: jhadmin@justicehealth.nsw.gov.au

A: 1300 Anzac Parade, Malabar NSW 2036

PO Box 150, Matraville NSW 2036

W: <http://www.justicehealth.nsw.gov.au/>

