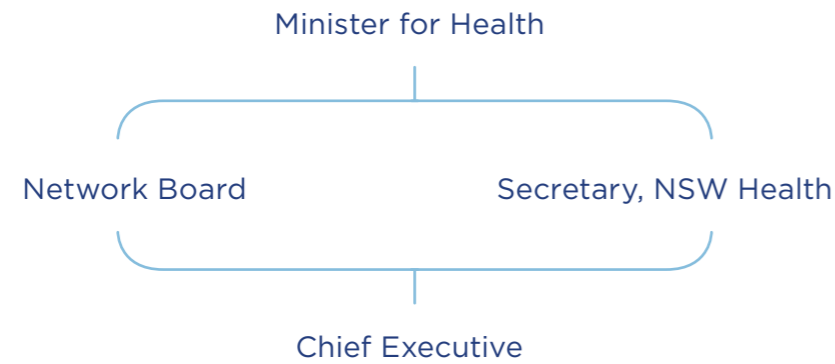


# Our Organisation



## Corporate Services Executive Director Corporate Services

- Contracts and Procurement
- Corporate Operations
- Education and Training
- Finance
- Information and Communications Technology
- Information Management
- Organisational Development
- Research
- Workforce

## Medical Administration Executive Medical Director

- Medical Appointment and Compliance
- Medical Education and Training
- Medical Leadership
- Expert advice on Medical Policy

## Performance and Planning Executive Director Performance and Planning

- Aboriginal Strategy and Culture
- Clinical and Corporate Governance
- Commissioning
- Communications
- Performance and Strategy

## Clinical Operations Executive Director Clinical Operations

- **Allied Health**
  - Clinical Leadership
- **Clinical Business Unit**
  - Business Flow and Analysis
  - Data Coordination
  - New Projects, Initiatives and Operations Support
  - Performance and Service Integration
  - Research Integration
- **Forensic Mental Health**
  - Community Forensic Mental Health Service
  - Forensic Hospital
  - Forensic Mental Health Network Coordination Team
  - Forensic Mental Health Research
  - Statewide Community and Court Liaison Service
- **Operations and Nursing**
  - Adult and Adolescent Custodial Health Centres
  - Integrated Care Services
  - Long Bay Hospital
  - Police Cells
- **Service and Programs**
  - Adolescent Mental Health
  - Custodial Mental Health
  - Drug and Alcohol
  - Population Health
  - Primary Care
  - Transitional Programs

### Our Network Executive Team comprises:

- Chief Executive
- Executive Directors
- Chief Financial Officer
- Co-Director Forensic Mental Health (Clinical)
- Director Aboriginal Strategy and Culture
- Director Allied Health
- Director Clinical and Corporate Governance
- Director Communications
- Director Workforce
- Network Director of Nursing and Midwifery Services

